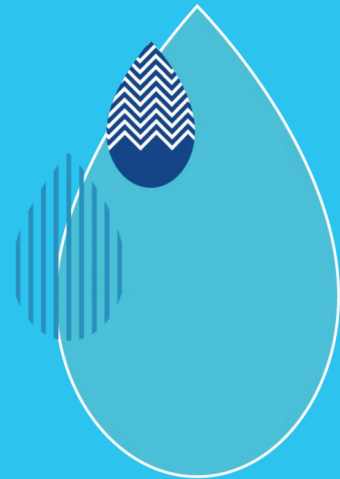




WDWK BIOTECH

WDWK Dairy Test Kit

- Quantitative or qualitative
- High Sensitivity
- Reliable results
- Cost-effective
- Easy to operate
- Few Lab Equipment Required
- Fast and efficient





About Us

WDWK Biotech is a leading national group focused on providing easy, fast, and efficient method used for food safety and livestock animal disease testing solutions.

We provide comprehensive solutions for antibiotic residues in milk, meat, poultry, eggs, and aquatic products, as well as mycotoxins in grain and feed. Additionally, we offer livestock animal disease diagnostics solutions. Our goal is to improve health and quality of life by developing cost-effective and rapid testing solutions.

Our comprehensive testing solutions encompass lateral flow, ELISA tests, and Real-time PCR to cater to the specific requirements of your operations. Our solutions are designed to be easy to use with minimal training and meet regional regulations across the globe.

We gathered a large number of industry-leading biology, chemistry, automation and information technology experts. Our technical strength makes us flexible and capable of individual customization to meet customized requirement of our valued customers.



WDWK BIOTECH

Beijing WDWK Biotechnology Co., Ltd.

Core Competence

Independent R&D on Antigen and Antibody

We developed an antibody library for small molecule compounds with a capacity of nearly 400 targets, 37 patents were granted.

Extensive Product Range

Services for milk, meat, poultry, egg, aquatic product, feed/grain, animal disease and etc.

Integrated technology: Qualitative lateral flow assay, quantitative lateral flow assay, ELISA, fluorescent immunoassay, Real-Time PCR

Accessory products: incubators, readers, various standards.

Flexible and Intelligent Customization in 1 Month

Based on our antibody resource and developed products, we are ready for the fast response to clients' requirement, such as multiplex assay, various samples, different LoD values, OEM

Large Production Capacity & Certified Quality Management System

Large scale Gold nanoparticle antibody conjugates production capacity,
Highly automated cassette assembly production lines,
30 million tests/year,
Certified ISO9001, ISO14001, ISO45001, ISO27001, GMP.

Design different test kits according to different detection requirements
 Provide more accurate judgment basis for rapid screening of dairy safety
 Analyte: Aflatoxin M1, Antibiotic, Hormone and Anabolic residues
 Detection Sample: Raw milk and milk products

Lateral Flow Test Kits

- Quantitative or qualitative testing
- Quick and Reliable
- Results in 6-10 minutes
- Easy to use
- High Sensitivity
- Visually interpretation of results
- Quantity per Package: 96 tests/box



Combo Test Strips

Product	Sample/LOD (ppb= $\mu\text{g}/\text{kg}$)	Spec. (test/kit)
Beta-Lactams+Tetracyclines	1-60	96
Beta-Lactams+ Cefalexin	2-70	96
Beta-Lactams+Tetracyclines+Cefalexin	1.5-70	96
Tetracyclines+Sulfonamides+Beta-Lactams	1-80	96
Beta-Lactams+Tetracyclines+Chloramphenicol+Streptomycin+ Cephalexin	0.3-100	96
Beta-Lactams+Tetracyclines+Chloramphenicol+Streptomycin	0.3-600	96
Beta-Lactams+Sulfonamides+Tetracyclines+Quinolones	1-80	96
Beta-Lactams+Sulfonamides+Cefalexin+Tetracyclines	1-50	96
Beta-Lactams+Tetracyclines+Cefalexin+Melamine	1-50	96
Erythromycin+Lincomycin+Tylosin/Tilmicosin	3-35	96
Quinolones+Sulfonamides+Erythromycin+Lincomycin+Tylosin/Tilmicosin	1-200	96
Gentamicin+Kanamycin+Streptomycin	2-15	96
Gentamicin+Neomycin+Spectinomycin+Kanamycin	40-50	96
Erythromycin+Spiramycin+Tylosin	40-200-100	96
Gentamicin+Neomycin+Streptomycin+Spectinomycin-Kanamycin	140-350-140-140-105	96
Streptomycin+Gentamicin+Neomycin	0-50 60-100 100-200	96
Sulfonamide+Trimethoprim	1-25	96
Quinolones+Sulfonamides	0.5-5; 1-20	96
Florfenicol+Thiamphenicol	0.1-0.15	96
Dexamethasone+Betamethasone	0.2	96



WDWK BIOTECH

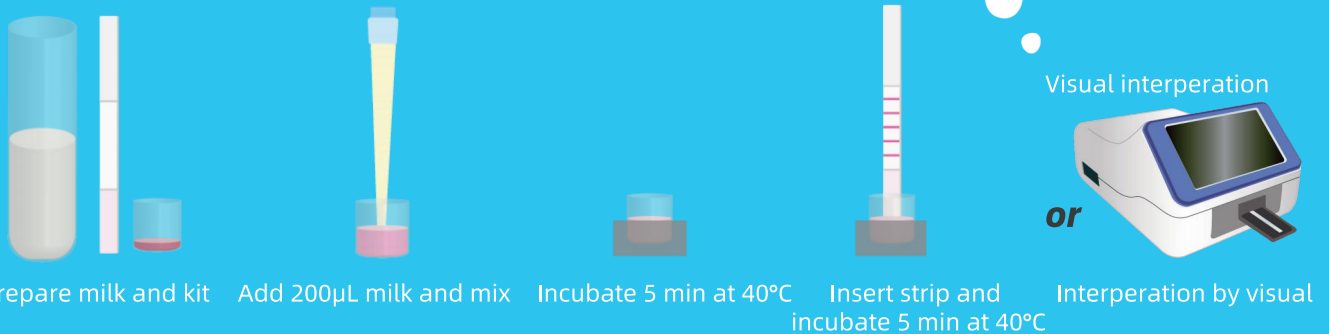
4IN1 BTCS

Beta-lactams+Tetracyclines+Chloramphenicol +Streptomycin Rapid Test Kit

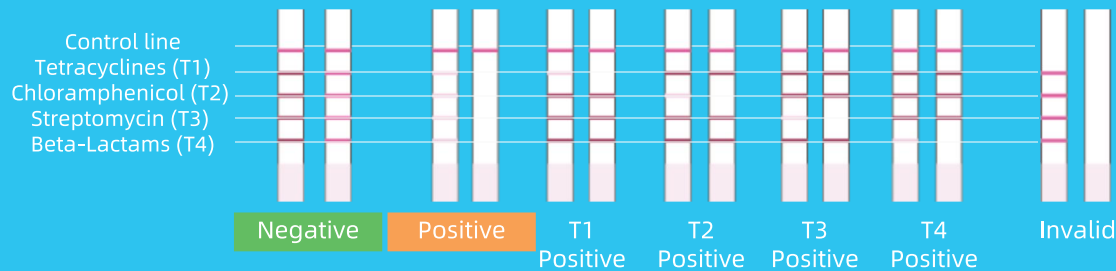
Advantages

- Result in 10 min
- Sensitive
- User friendly
- Visual interpretation
- Cost-effective
- Accurate and reliable

Test Procedure



Results



Antibiotics	LOD
Tetracyclines (T1)	
Oxytetracycline	5-8
Tetracycline	5-8
Chlorotetracycline	5-10
Doxycycline	5-8
Chloramphenicol (T2)	
Chloramphenicol	0.3
Streptomycin (T3)	
Streptomycin	15-30
Dihydrostreptomycin	15-30

Antibiotics	LOD	Antibiotics	LOD
Beta-Lactams (T4)			
Penicillin G	1-2	Cefoperazone	0.5-1
Ampicillin	2-3	Cefazolin	30
Amoxicillin	2	Ceftiofur	30-50
Oxacillin	5	Benzathine benzylpenicillin	1-2
Cloxacillin	3-5	Procaine penicillin G	0.5-1
Nafcillin	5-10	Cephalonium	3-5
Cefacetrile	15-30	Cephalexin	400-600
Dicloxacillin	2-3	Cefquinome	4-7
Cephapirin	4-8	Cloxacillin	3-5

Lateral Flow Test Kits

Single Test Kits

Antibiotics, Hormones, Mycotoxins, Pesticides, Adulteration



Antibiotics, Hormones

Product	Sample/LOD (ppb= $\mu\text{g}/\text{kg}$)	Spec. (test/kit)
Beta-lactams	2-70	96
Chloramphenicol	0.1	96
Sulfonamides	1-10	96
Quinolones	0.5-5	96
Gentamicin	50	96
Streptomycin	50	96
Lincomycin	3	96
Kanamycin	50	96
Spiramycin	30-50	96
Meloxicam	5	96
Tylosin	50	96
Tilmicosin	35	96
Neomycin	200	96
Erythromycin	10	96
Spectinomycin	100	96
Thiamphenicol	5	96
Florfenicol	0.1	96
Clavulanic Acid	10-20	96
Albendazole	3-50	96
Bacitracin	20	96
Avermectin	1-14	96
Doramectin	8-14	96
Fipronil	10	96
Flunixin	2	96
Acetaminophen	5	96
Dexamethasone	0.2	96
Betamethasone	0.2	96
Beta-lactamase	2 U	96

Mycotoxins

Product	Sample/LOD (ppb= $\mu\text{g}/\text{kg}$)	Spec. (test/kit)
Aflatoxin M1	0.05	96
Aflatoxin M1	0.3-0.4	96
Aflatoxin M1	0.035	96
Aflatoxin M1	10-1000 ppt	96

Pesticides

Product	Sample/LOD (ppb= $\mu\text{g}/\text{kg}$)	Spec. (test/kit)
Carbendazim	2-4	96
Imidacloprid	0.5-1	96
Cyromazine	8-10	96
Acetamiprid	0.8-1	96

Adulteration

Product	Sample/LOD (ppb= $\mu\text{g}/\text{kg}$)	Spec. (test/kit)
Detect Cow Milk in Buffalo Milk	0.05% Cow Milk	96
Detect Cow Milk in Camel Milk	0.1%-0.2% Cow Milk 0.3%-0.5% Goat Milk	96
Detect Cow Milk in Goat Milk	0.05% Cow Milk	96
Melamine	5	96
Melamine	10	96
Melamine	50	96
Melamine	30-50	96
Benzoic Acid	3-5 ppm	96

More LOD values and OEM are available



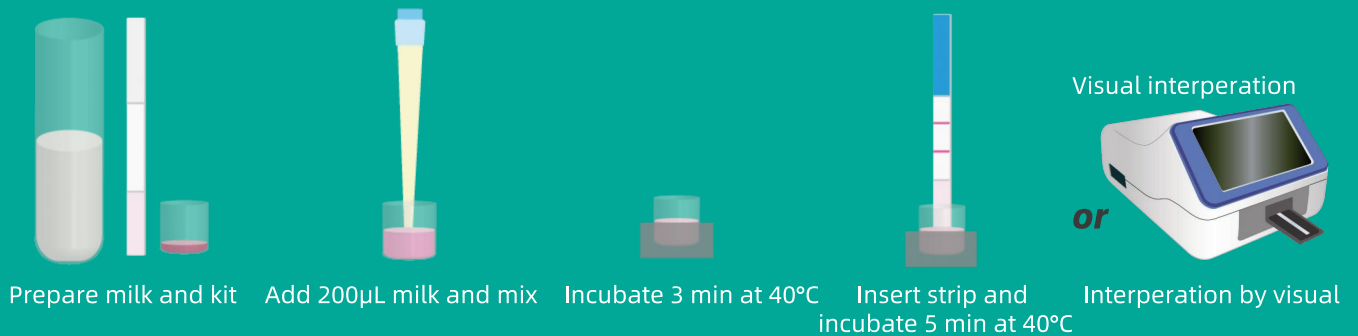
Melamine Rapid Test Kit

This Kit is used for the qualitative determination of Melamine in Raw milk based on the colloidal gold immunochromatography technology.

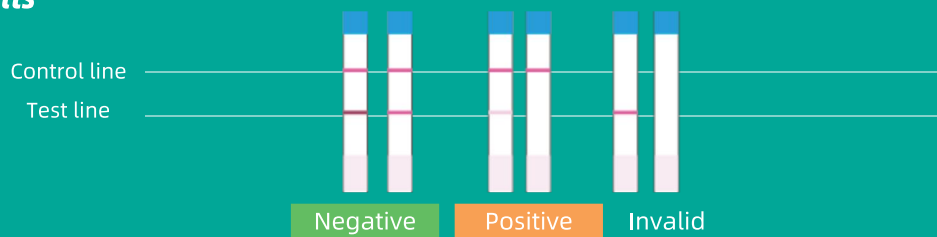
Advantages

- Result in 8 min
- Sensitive
- User friendly
- Visual interpretation
- Cost-effective
- Accurate and reliable

Test Procedure



Results



Name	LOD
Melamine	5
Melamine	10
Melamine	50
Melamine	30-50

Aflatoxin M1 Fluorescence Quantitative Rapid Test Kit

The fluorescence quantitative rapid test kit for Aflatoxin M1 adopts the time-resolved fluorescence immunochromatography method which can rapidly detect the content of Aflatoxin M1 in milk with detection range of 10-1000 ppt.



Advantages

- Accurate analytics with lateral flow tests
- Fluorescent Quantitative
- Testing Time: 6 minutes
- Easy to perform
- Accurate and objective results from Instrument interpretation
- Raw Milk, Milk powder: 10-1000 ppt (ng/kg)

Test Procedure

Turn on the fluorescence immunoassay quantitative analyzer for 10 minutes. Turn on incubator to 40°C.



Use the scanner to scan the QR code to import product information



Mark and place the test kit on the incubator (40°C)



Add 100 μ L sample to the microwell



Add the mixture to the sample well. Reaction 6 mins at 40°C



Interperation by Reader



WDWK BIOTECH

Aflatoxin M1 Elisa Kit

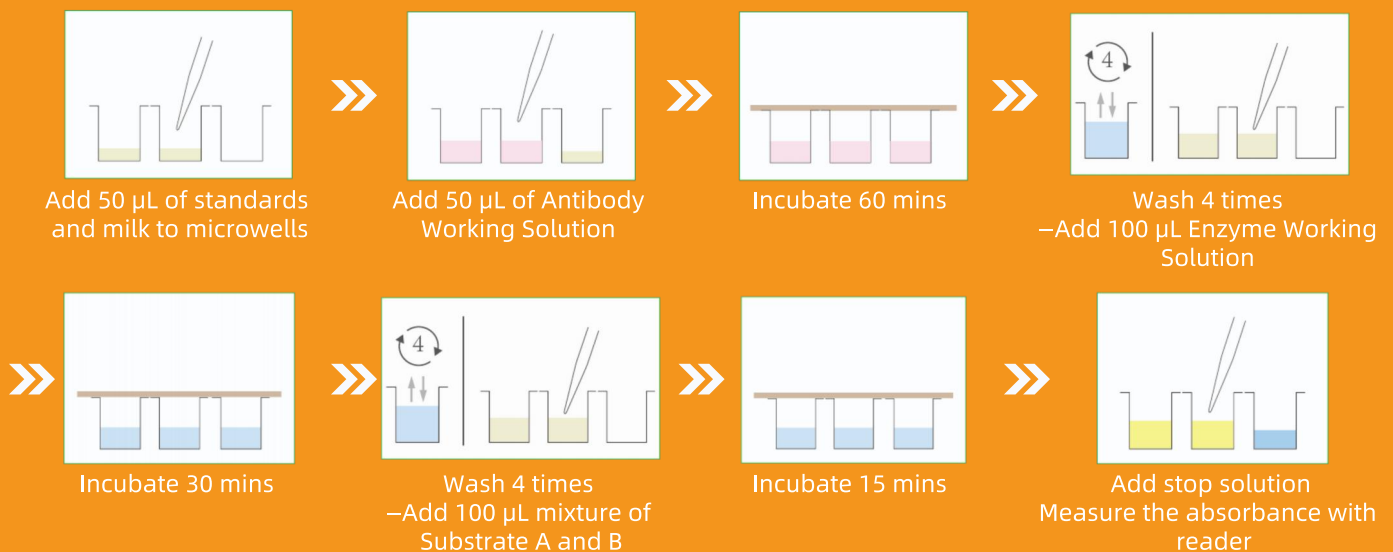
The kit is an enzyme-linked immunosorbent assay(ELISA) for the quantitative determination of Aflatoxin M1(AFM1) in raw milk, Pasteurized milk, Sterilized milk, reconstituted milk, Fermented milk, Acidic milk drink, milk powder and cheese.



Advantages

- High sensitivity
- Specific, fast and reliable
- Easy and quantitative testing
- Testing Time: 45-60 minutes
- Quantity per Package: 96 Wells/Kit
- Sensitivity: 0.005 ppb
- Standard Line Range: 0.005 ppb ~ 0.27 ppb
- Detection Limit: 0.02 ppb

Test Procedure



ELISA Kits

The enzyme-linked immunosorbent assay (ELISA) is an antibody-based test method. This widespread technology is mostly used for quantitative analysis, which is easy to use, sensitive, fast and reliable.



Advantages

- Rapid, reliable & cost-effective testing solutions
- Quantitative
- High sensitivity
- User friendly
- Accurate and reliable
- Suitable for a wide range of matrices



Product	Sample/LOD (ppb= $\mu\text{g}/\text{kg}$)	Spec. (test/kit)
Chloramphenicol	0.1	96
Florfenicol	0.3	96
Diethylstilbestrol	0.5	96
Metronidazole	1	96
Quinolones	10	96
Spectinomycin	5	96
Tetracyclines	10	96
Abamectin	5	96
Albendazole	5	96
AMOZ	35	96
AOZ	0.1	96
Biotin	0.08 $\mu\text{g}/100\text{g}$	96
Clavulanic acid	25	96
Cyromazine	10	96
Erythromycin	5	96
Estradiol	5	96
Fluoroquinolones	10	96

Product	Sample/LOD (ppb= $\mu\text{g}/\text{kg}$)	Spec. (test/kit)
Gentamicin	15	96
Ivermectin	1	96
Kanamycin	50	96
Lincomycin	50	96
Methylchloramphenicol	1	96
Monensin	1	96
Neomycin	20	96
Nitroimidazoles	1	96
Penicillin G	0.2	96
Ribavirin	2	96
Streptomycin	15	96
Sulbactam	50	96
Melamine	20	96
Tylosin	20	96
Zearalenol	1	96

Welcome customized sensitivity, samples, and residues.

Beijing WDWK Biotechnology Co., Ltd.

Address: 3#, Yinhua Rd. 60, Haidian Dist, Beijing City, China-100095

Website: en.wdwkbio.com

Telephone: +86(10)-59810558 ext 214

E-mail: info@wdwkbio.com

